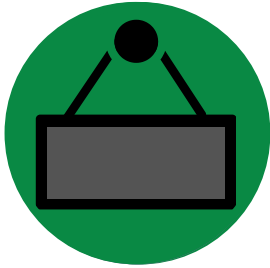
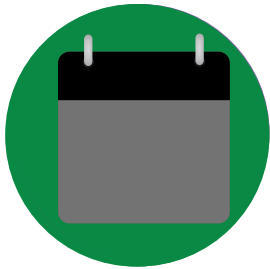


SAVE THE DATE

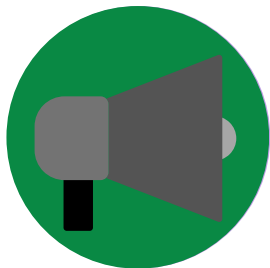
mark your calendars for scholarship season



November 1
Applications Open



February 15
Applications Due



April & May
Decisions Announced

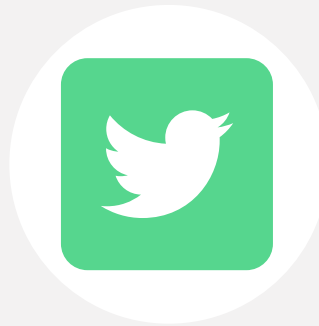
FIND US



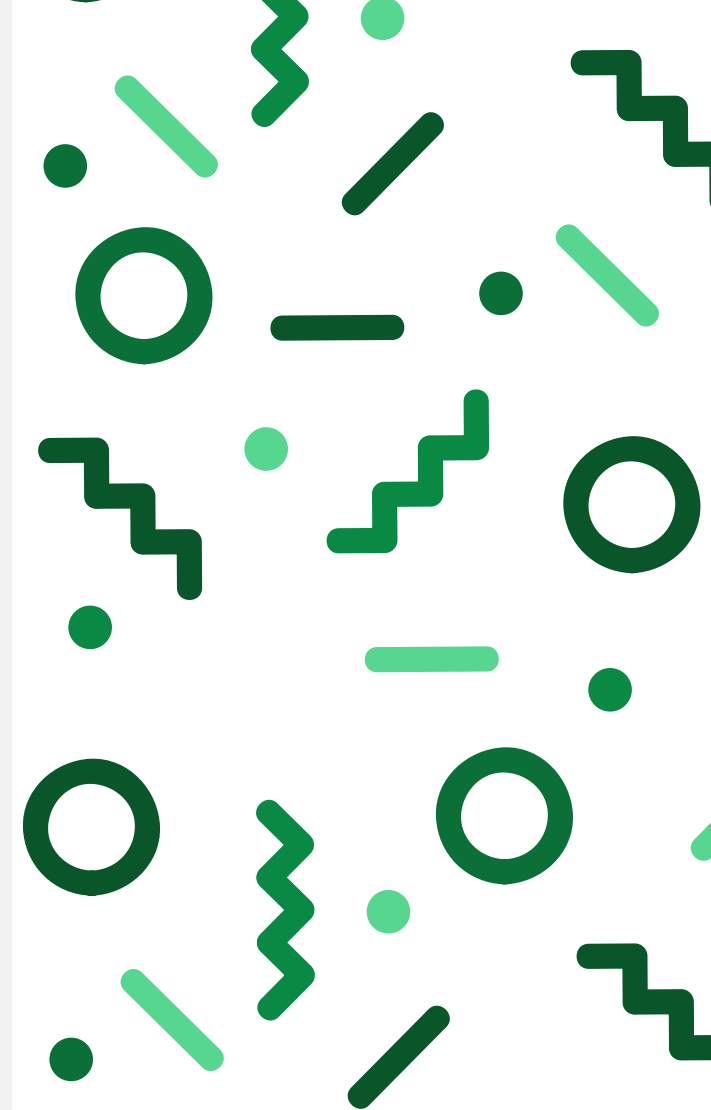
FACEBOOK
@SmokyHillsCF



WEBSITE
<http://www.smokyhillscf.org>



TWITTER
@GreaterSalinaCF



SCHOLARSHIPS
A Guide for Students & Guardians

CHECK LIST



Check out the community foundation's website

Create an account/make sure you can login

Take eligibility quiz

Preview scholarships you are eligible for

Request letters of recommendation if required

Fill out all required fields within application(s)

Submit application(s)

Check email for a decision notice

Complete follow ups if awarded a scholarship

PREPARE

- Check out our website! The "Scholarships" tab is a great place to start!
- Mark all due dates on a calendar.
- Start thinking about who you might ask to write you a letter of recommendation.
- It is a good idea to update your resume, round up transcripts (official or unofficial), and find your Student Aid Report.

APPLY

- Applications are submitted through our online system. You can access it by going to our website and clicking the "Scholarships" tab.
- First time users will click "Take the Assessment" button to create an account and take our eligibility quiz.
- Once logged in, you will be able to hit the home icon to access your Applicant Dashboard and the "Apply" tab to find new scholarship opportunities.

ACCEPT

- You will be notified via email if you have received a scholarship. To accept, log back into the online portal and hit the home icon to access your Applicant Dashboard. There, you will be asked to submit an acceptance form, photo, and thank you note.

FAQs

How do I get to the online scholarship portal?

gscf.org/scholarshipapplication

Can I apply for more than one scholarship?

You are encouraged to apply for all of the scholarships in which you meet eligibility requirements . Additionally, you may receive awards for multiple scholarships.

When should I request letters of recommendations by?

While not required by the Foundation, it is standard to ask recommenders at least two weeks before the submission deadline.

What if I forgot my login password?

Visit the scholarship portal and click "Forgot Password" at the bottom of the screen. You will be prompted to enter your email. Once entered, a recovery link will be sent to you.

What are some application tips?

For tips, please visit the "Scholarships" tab on our website.

FOR MORE FAQs AND TUTORIALS, VISIT OUR WEBSITE!